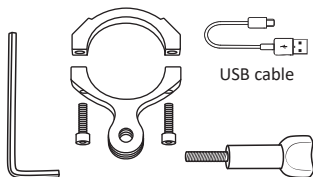
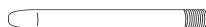
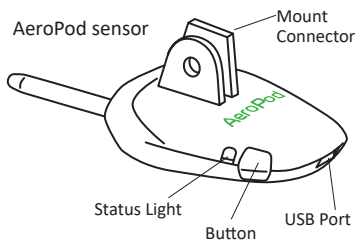


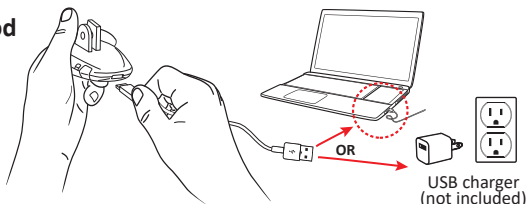
AeroPod Instructions

AeroPod

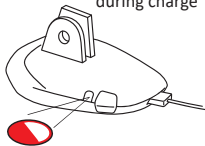
PACKAGE CONTENTS



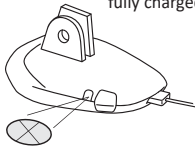
1. Charge AeroPod



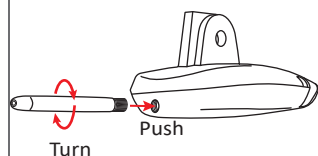
1A Flashes **RED** during charge



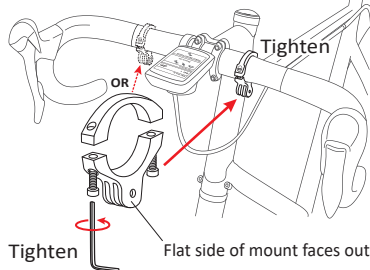
1B Light off fully charged



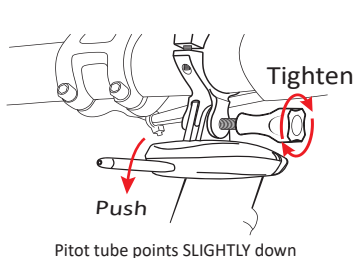
2. Attach pitot tube



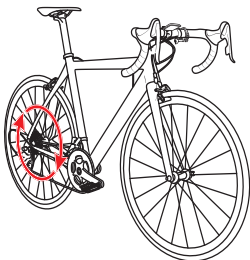
3. Attach mount to bike



4. Attach AeroPod to mount

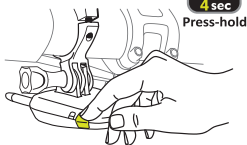


5. Pair AeroPod to ANT+ bike speed sensor



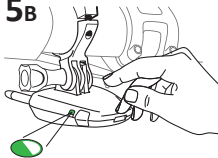
Spin sensor wheel
to awaken speed sensor

5A



Press-hold button 4 sec. to pair

5B



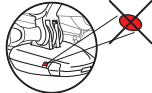
Release button
when **FLASHING GREEN**

5c



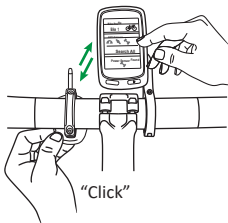
AFTER successful
pairing light is
SOLID YELLOW

5D



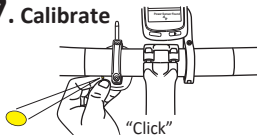
RED: pairing unsuccessful

6. Pair AeroPod to your ANT+ bike computer



Refer to your ANT+ bike computer
manual for pairing instructions

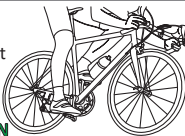
7. Calibrate



SOLID YELLOW - ready to calibrate

7A

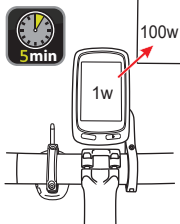
Click to start
calibration
ride when
flashing
RED/GREEN



Refer to O&B cal ride instructions sheet

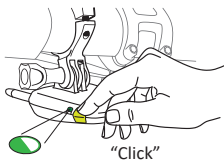
7B

Ride out: watts go
from 1 to 50; STOP,
and ride back to 100



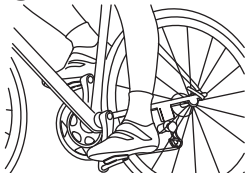
After calibration, actual
power shown

8. Starting New Ride



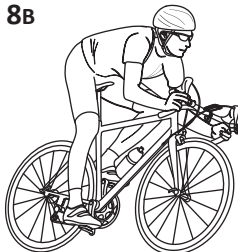
Light **FLASHES GREEN**

8A



Spin wheel, light changes to
SOLID GREEN

8B



GREEN MEANS GO!