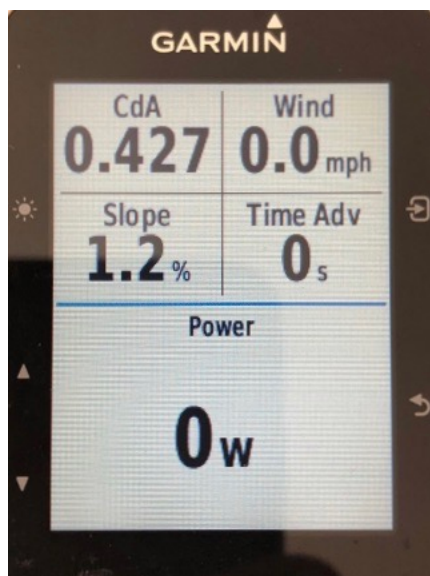


## Setting up and using AeroPod® CdA app

***AeroPod® CdA/Time Advantage/Wind/Slope***  
***PowerPod® V3 Wind/Slope***  
***English/Metric wind speed***  
***.FIT data transfer***

**July 2020**



## Introduction

AeroPod® products transmit live CdA, Time Advantage, wind speed, hill slope, and power data

PowerPod® V3 products transmit live wind speed and hill slope data (live CdA and Time Advantage are not transmitted).

The AeroPod CdA app, available from Garmin's ConnectIQ store, allows you to display this data on your Garmin device.

Additional features on the AeroPod CdA app allow you to set wind speed units displayed (English or metric). Also, the AeroPod CdA app records CdA/Time Advantage/Wind Speed/Slope data in the Garmin .FIT file.

The AeroPod CdA app is compatible with many Garmin bike computers and wearables.

*These instructions tell you how to set up and use your Garmin to display AeroPod CdA data fields on your Garmin.*

**IMPORTANT: IF YOU HAVE PREVIOUSLY INSTALLED VELOCOMP'S "AEROPOD\_CONNECTIQ\_CDA.PRG" APP ON YOUR GARMIN DEVICE, YOU WILL HAVE TO UNINSTALL THE "OLD" .PRG APP BEFORE INSTALLING THE "NEW" AeroPod CdA APP FROM THE CONNECTIQ APP STORE.**

For information regarding attaching AeroPod/PowerPod V3 to your bike, and pairing AeroPod/PowerPod V3 to your ANT+ sensors, please consult the **Installation Instructions**, included with your AeroPod/PowerPod V3.

**Step 1. IF NEEDED: Uninstall AeroPodCdA.prg app from your device**

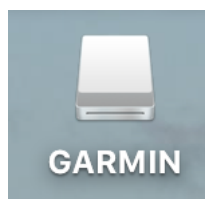
*Step 1 is required only if you have previously installed the “AeroPod\_ConnectIQ\_CdA.prg” app on your Garmin device.*

**IF YOU HAVE NEVER INSTALLED THE “AeroPod\_ConnectIQ\_CdA.prg” APP ON YOUR GARMIN DEVICE, SKIP TO STEP 2**

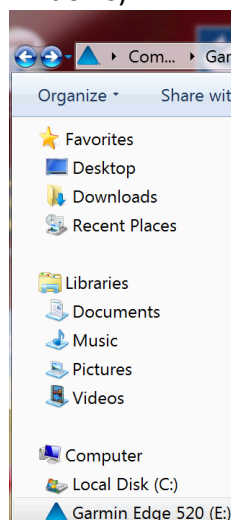
- A. Using your Garmin’s USB cable, connect your Garmin to your computer. Make sure your Garmin is turned on.

**NOTE: IN THESE INSTRUCTIONS THE GARMIN 520 IS USED. YOUR GARMIN MODEL MAY BE DIFFERENT**

Once your Garmin is connected to your computer, you will see a USB drive named “GARMIN” appear on your desktop (macOS), or as the “E” drive (Windows)



Mac

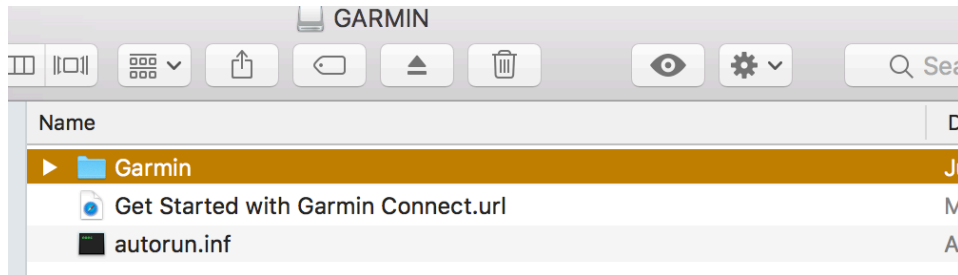


Windows

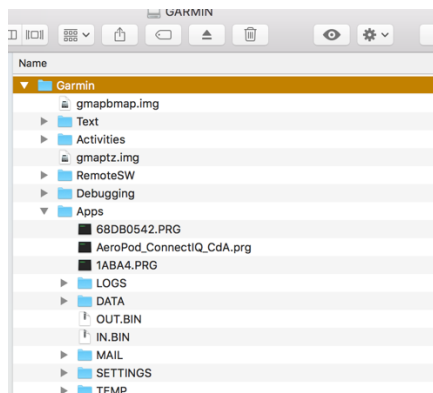
- B. Delete the old AeroPod\_ConnectIQ\_CdA app from your Garmin device

**Delete old app from Mac:**

1. Double click the “GARMIN” drive icon. You will see the “Garmin” folder

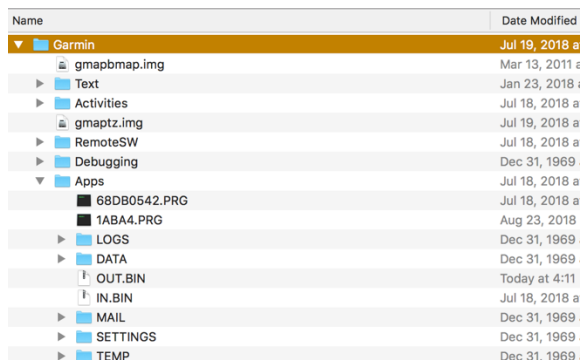


2. Click the > to the left of the Garmin folder to open the folder. You will see the “Apps” folder. Click the > to the left of the “Apps” folder. Inside the Apps folder you will find the previously-installed version of the AeroPod CdA app. You will see this:



**NOTE: If you don’t see the “AeroPod\_ConnectIQ\_CdA.prg” app inside the Apps folder, it is not installed on your Garmin device, and you may skip to step 2.**

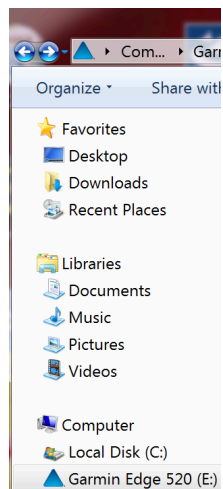
3. Click on “AeroPod\_ConnectIQ\_CdA.prg” to highlight it, THEN CLICK ON THE TRASH CAN TO REMOVE THE APP FROM THE GARMIN APPS FOLDER



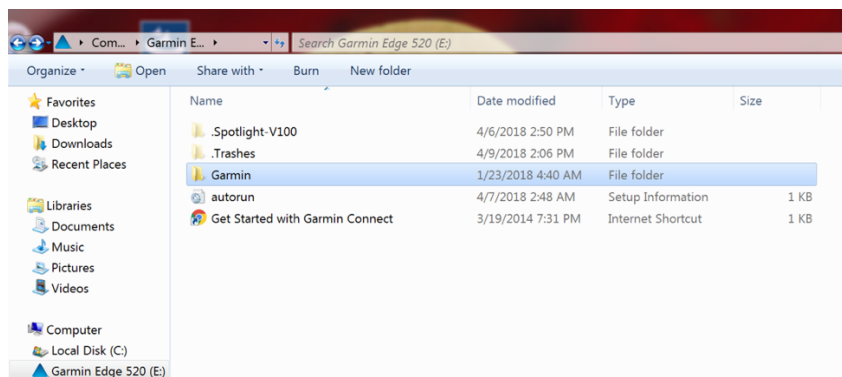
4. Click on your Mac’s trash can icon, then empty the trash. This removes the old AeroPod CdA app from your Garmin.

## Delete old app from Windows:

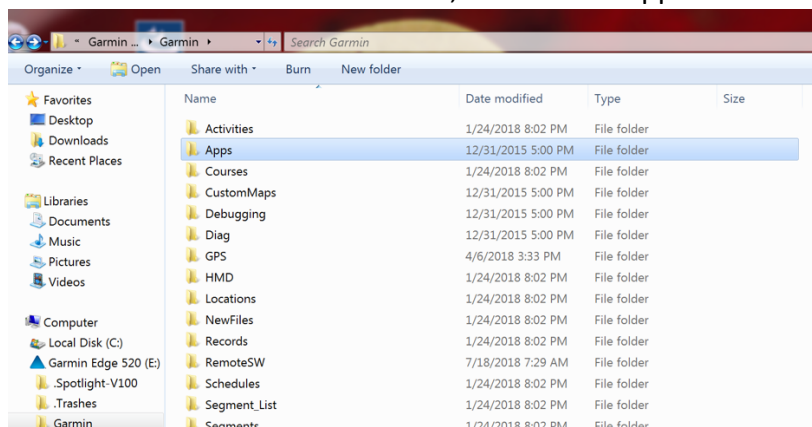
1. You will find your Garmin E drive under the “Start/Computer” setting.



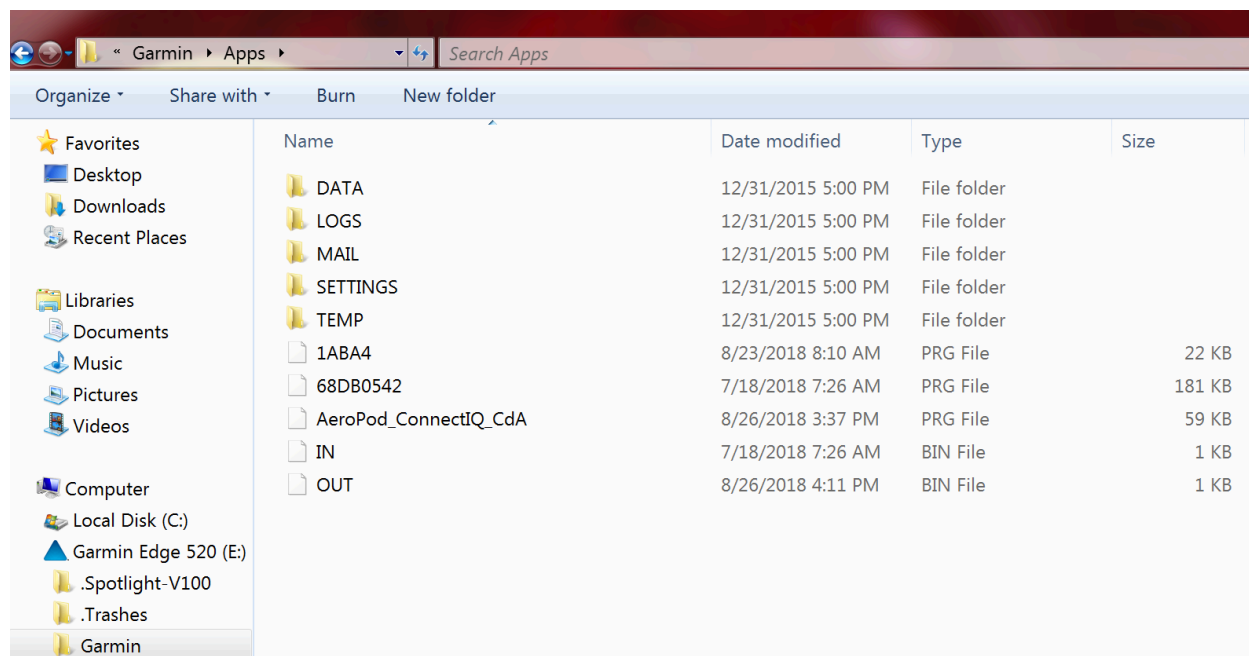
2. Double click on the Garmin E drive. You will find the “Garmin” folder



3. Double click on “Garmin” folder, to find the “Apps” folder

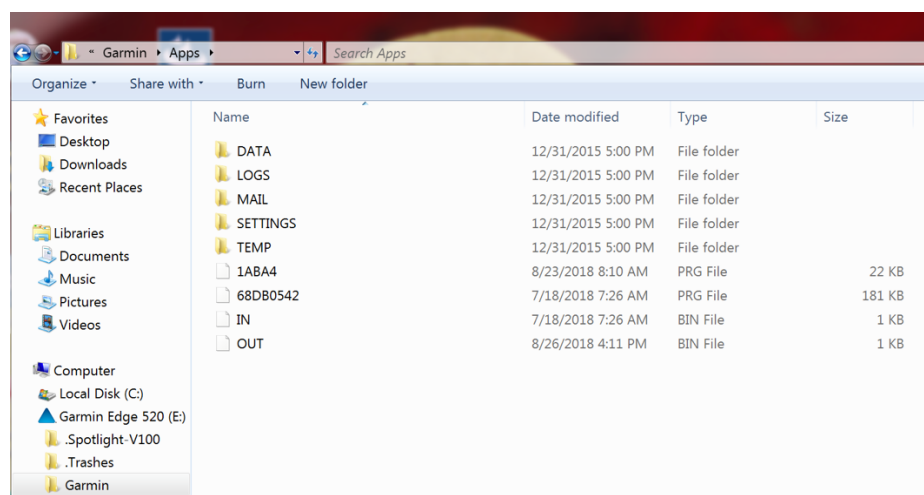


4. Double click on the “Apps” folder to open it and show the AeroPod\_ConnectIQ\_CdA app:



**NOTE: If you don't see the “AeroPod\_ConnectIQ\_CdA” app inside the Apps folder, it is not installed on your Garmin device, and you may skip to step 2.**

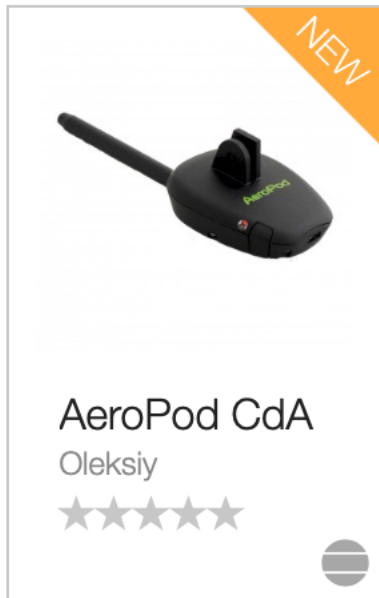
3. Click on “AeroPod\_ConnectIQ\_CdA” to highlight it, THEN RIGHT-CLICK AND REMOVE IT FROM THE GARMIN APPS FOLDER



## Step 2: Install new AeroPod CdA app on your Garmin

Mac and Windows:

- A. Make sure your Garmin device is connected to your computer
- B. Go to [apps.garmin.com](https://apps.garmin.com)
- C. Search for “AeroPod”
- D. Click on AeroPod CdA



- E. Click on the “Download” button and follow the Garmin instructions to install the AeroPod CdA app

## The “AeroPod CdA” app is now installed on your Garmin

### Step 3: Unplug your Garmin from your computer

### Step 4: Pair your AeroPod or PowerPod V3 device to your Garmin

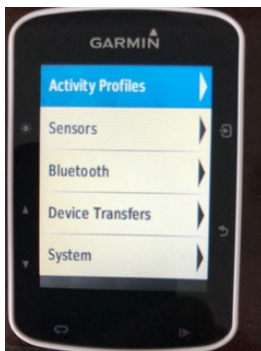
1. Wake up your bike sensors
2. Make sure AeroPod/PowerPod V3 has been paired to your bike sensors
3. Wake up your AeroPod/PowerPod V3
4. Follow the instructions of your Garmin to pair AeroPod/PowerPod V3 to your Garmin

## Step 5: Setup Garmin with AeroPod CdA display screen

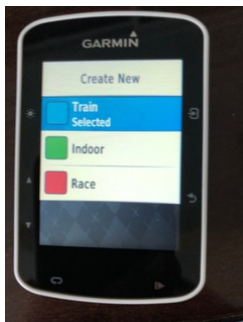
A. Find, highlight and select the Settings screen (Edge 520 shown below)



B: Find and Select “Activity Profiles”:

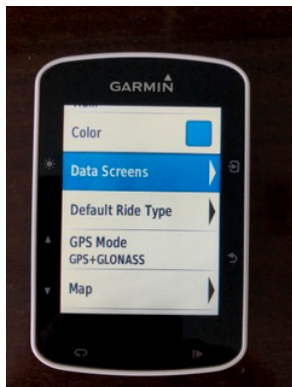


C: Select the Activity Profile where you want to see the CdA screen. In this example, “Train” is the Activity Profile selected:





#### D: Select “Data Screens”

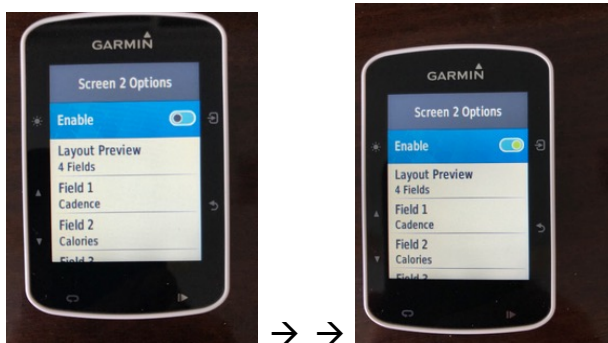


#### E: Set up a new screen with 2 fields

(Note that in this Garmin, only Screen 1 was active. Screen 2 was off and was pre-programmed for 4 fields. Your Garmin may show something different)



Select screen 2, and enable it:

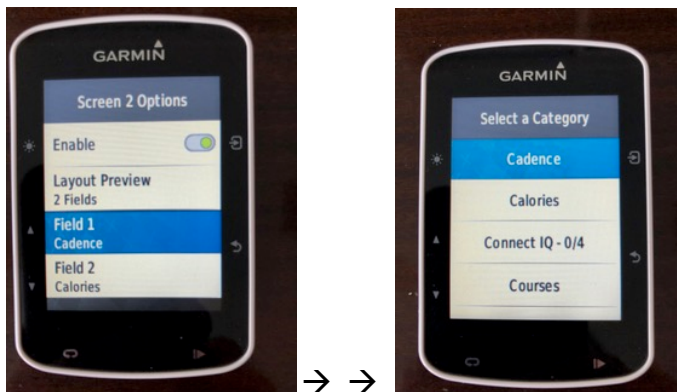


**F: Select “Layout Preview”, and change “Layout Preview” from 4 fields to 2 fields**



**G: Set “Field 1” to AeroPod CdA**

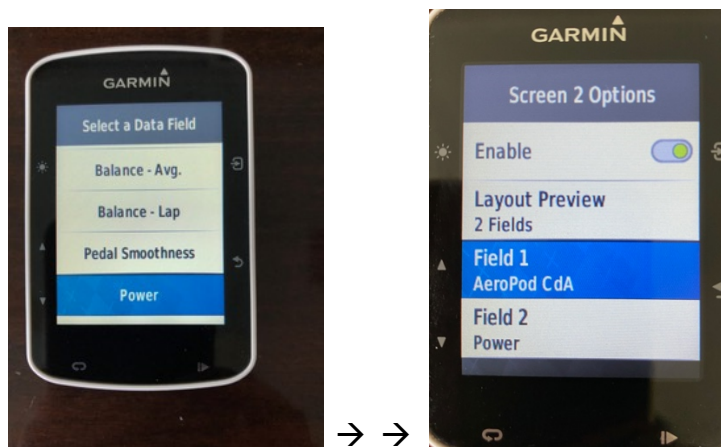
→ 1. In this device Field 1 was pre-set to Cadence



2. Scroll down to “Connect IQ” and select “AeroPod CdA” for Field 1



**H. Set Field 2 to “Power”**



*Your Garmin is now ready to display CdA, Time Advantage, Wind Speed, and Slope*

**NOTE: DEPENDING ON THE SPEED AND DISTANCE SETTINGS OF YOUR GARMIN, WIND SPEED WILL BE DISPLAYED EITHER IN ENGLISH OR METRIC UNITS**



**METRIC**



**ENGLISH**

## Step 6: Ready to Ride!

When starting the day's ride, wake up your ANT+ devices, **in this order:**

- 1) Spin bike wheel to wake up your bike's speed sensor, and (AeroPod only) DFPM sensor
- 2) Click AeroPod (or PowerPod) button to awaken it. Light will flash green. When AP/PP pairs to the sensor(s), status light will turn solid green for a moment, then turn off
- 3) **After** AP/PP is paired to your sensors, **then** turn on your Garmin.
- 4) Start riding. For the first few seconds you may see - - - in the CdA/Wind/Slope fields of the ConnectIQ screen. After 30 seconds or so the - - - will change to numbers.



**AeroPod:** When riding with AeroPod, your Garmin screen will show live AeroPod CdA data: CdA, Wind, Slope, and Time Advantage

**PowerPod V3:** When riding with PowerPod V3, your Garmin screen will show live wind and slope data. ***CdA will be fixed at the value determined during setup, and Time Advantage will show a fixed value of "0".***